



COMPANY PROFILE

BR BRICKS cc

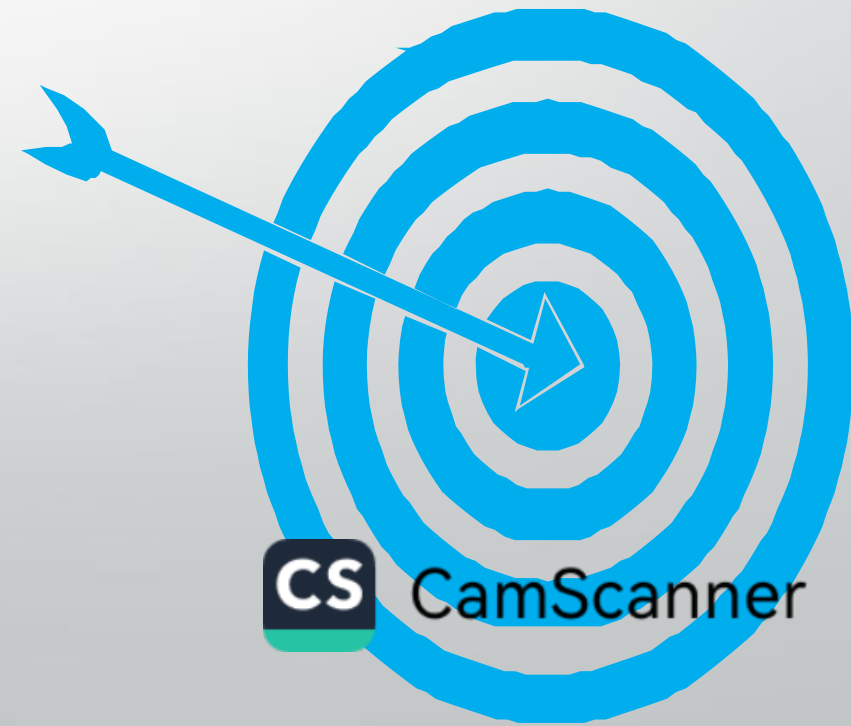
"We make your ASSETS safe through fencing"



- **BR Bricks CC** is leading manufacturing specializing in Clear view/ High Security fencing and concrete palisade products.
- Its a Matjhabeng based company under registration number 1996/034821/23.
- Our current head office and factory location is in Bronville where we actively involved in our community and revolutionizing the economic outlook community by providing real opportunities to make a meaningful contribution to the economy.

VISION

- To be the leaders in fencing and the preferred contractor offering a full integrated product. We endeavor to be recognized for consistently producing high quality products that exceeds client expectations.



OUR CORE VALUES

- Exceptional Service
- High Quality Efficient Product
- Good business Ethics
- Continuous Improvement
- Teamwork
- Safety and security
- Skills development

COMPANY OBJECTIVES

- Supply fencing solutions and consulting advise into residential, commercial, Mining and Commercial industries.
- Satisfy needs and expectations of our clients by offering the best products and services.
- Promote concept of economic development for our benefit of the country.
- Maintain world-class quality with a modern approach.
- Provide world-class output while minimizing cost
- Keep up with latest technology, training and employ from local communities.
- All jobs to be according to client's specs.



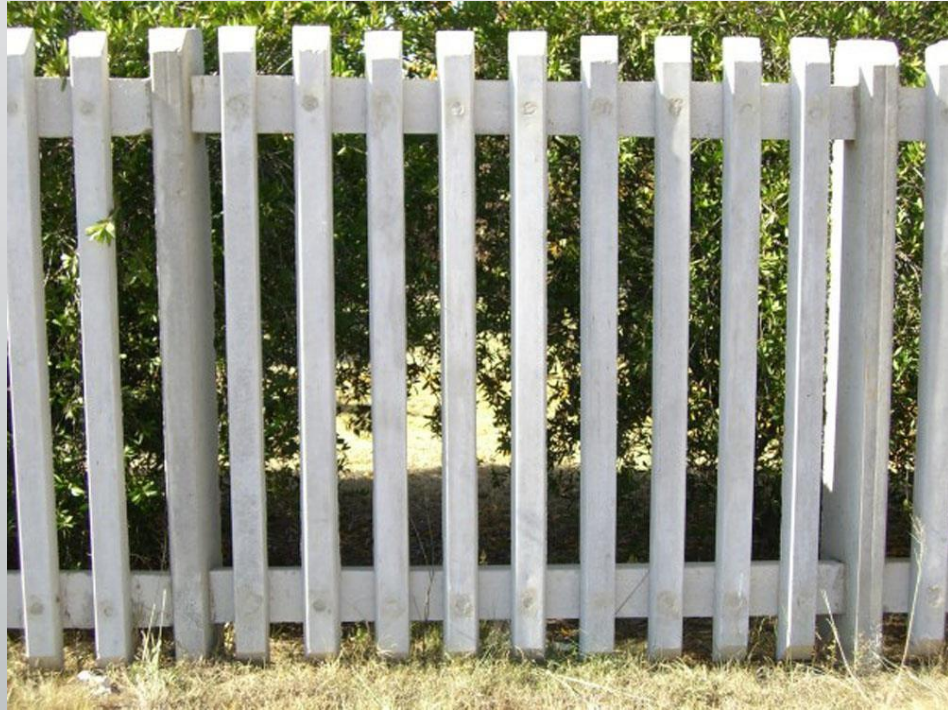
Safety, Health, Environment, and Quality (SHEQ) Policy Statement

- **BR BRICKS cc.,** is committed to a clean , safe and healthy environment for its
- employees , customers, suppliers and communities. This commitment includes a focus on identifying hazards and assessing risks. Implementing and continually improving safety, health and environmental objectives and the overall SHE management system to minimize risks in all operations and process.
- **BR BRICKS cc,** strives to ensure that Zero Harm befalls its employees, sub-contractors, the public and the environment.
- In recognition of our need to be good corporate citizens, the management of BR BRICKS cc., regularly reviews the SHE policy, monitoring both implementation and performance. In this way our SHE policy remains relevant and appropriate to the needs of the company. Furthermore , we comply with occupational health and safety legislation and with other related requirements to which the company as a whole subscribes.
- **We encourages employees to:**
 - conducting safety, health, environment and quality training and creating employee awareness
 - Participate in creating a safe work environment.
 - Be actively involved in the SHE management system
 - To be aware of the SHE requirements that will enable employees to minimize incidents and near misses
 - To report any unhealthy and unsafe situations, events

Safety, Health, Environment, and Quality (SHEQ) Policy Statement

- **Management in turn undertakes to:**
 - Ensure that all processes are environmentally friendly and beneficial to all parties involved
 - Ensure that all types of pollution are prevented
 - Enable continues development of products and processes and to meet national and international products
 - Strive to prevent property damage and process losses.
 - Provide access to skill development and training to employees who require it
 - Ensure that employees are responsible for understanding and incorporating safety, health, environment and quality into daily work activities.
 - Ensure that, Sub- contractors are responsible for meeting applicable safety, health, environment and quality compliance obligations and organizational requirements

PRODUCT RANGE



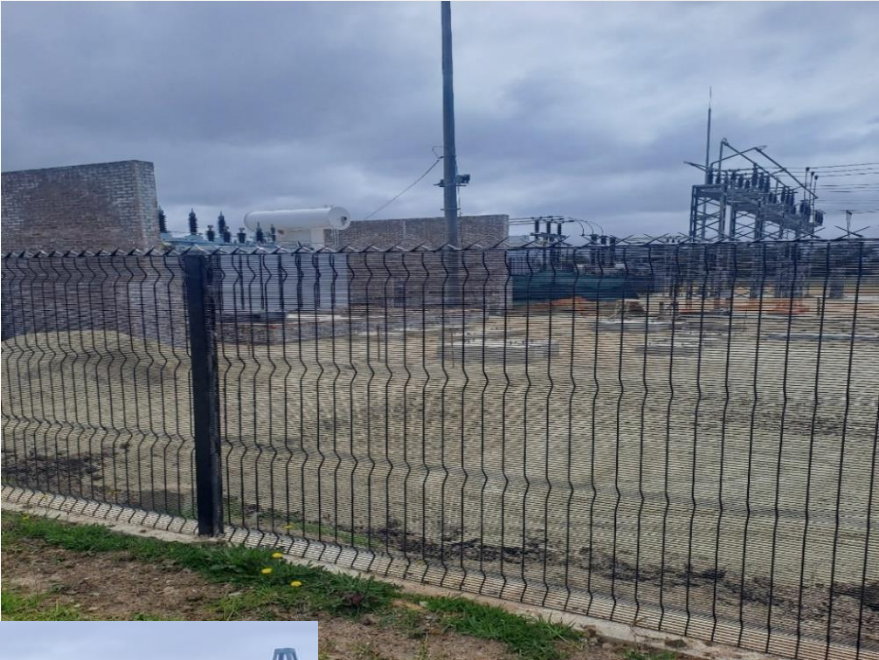
PROJECT COMPLETED



PROJECT COMPLETED



PROJECT COMPLETED



CamScanner

CLEAR VIEW FENCING TECHNICAL SPECIFICATIONS AND GUIDLINE


Installation Height


- 1800mm
- 2100mm
- 2400mm
- 3000mm


Embedded Height

- 2400mm
- 2700mm
- 3000mm
- 3600mm

SECURITY LEVEL on FENCES (HIGH/MEDIUM/LOW)

	HIGH-SECURITY HORIZONTAL	REFERENCE - 35810012
	WIRE DIAMETER	3 mm x 4 mm
	APERTURE (mm)	76 mm x 12,7 mm
	STANDARD WIRE TYPE	FULLY PRE - GALVANIZED WIRE
	RIGIDITY	4 V - bends

	MEDIUM-SECURITY HORIZONTAL	REFERENCE - 35810025
	WIRE DIAMETER	3 mm x 4 mm
	APERTURE (mm)	76 mm x 25 mm
	STANDARD WIRE TYPE	FULLY PRE - GALVANIZED WIRE
	RIGIDITY	4 V - bends

	LOW - SECURITY HORIZONTAL	REFERENCE - 35810050
	WIRE DIAMETER	3 mm x 4 mm
	APERTURE (mm)	76 mm x 50 mm
	STANDARD WIRE TYPE	FULLY PRE - GALVANIZED WIRE
	RIGIDITY	4 V - bends

- WITH SEPCIAL ARRANGEMENT WE ALSO MANUFACTURE**

4/4mm (12.5X76mm) Super High Security fence for special Customers that needs added security (Mines, Factories and Eskom etc.) . We also offer/guarantee after installation maintenance where our product is with vandalism with-in 48-hour replacement in 50km radius to reduce their on properties.

SECURITY FENCES TECHNICAL SPECIFICATIONS

PRE-GALVANISED

- Cost effective, strong and durable
- All welded mesh panels are pre-galvanized
- POLYESTER POWDER
 - Exterior , UV, resistant polyester powder coating available as a final finish to all pre-galvanized wire fence and components

PLASCOAT / PVC

- Pre-Galvanized panel , then the entire panel is plastic coated
- Corrosion protection, resistance to high UV, intense heat and salt resistance, impact and graffiti resistance
- Perfect for coastal applications
- 15-18 years guarantee – colour fading and cracks

POSTS and CAPS

- Square Post different sizes according to clients needs, T –
- Poles etc.
- C Class Hot Dipped Galvanized.
- Pre-Drilled
- Plastic cap.
- This post is used for all applications such as private homes, sports facilities, shopping mall, Solar plants, schools, hospitals etc.

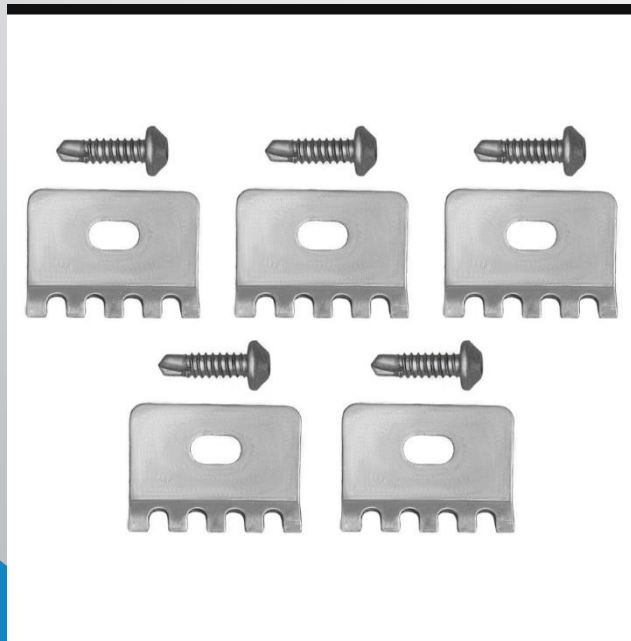


Screws for spike/shark tooth

1. **Sheer Off Nut** – M8 Anti Tamper Galvanized nut that sheers off installation **USE ON SPIKES ONLY.**
Cup Square Bolt – M8x45mm Galvanized Cup Square bolt
Washer – M8 Galvanized Washer

Screws for panel and posts attachment

2. The Spider Fence clamp with self tapping screws is designed to hold the fence panel securely to the post.



STEEL AND RAW WIRE SPECS.

- All material is locally sourced in South Africa. Galvanized input wire are steel posts are hot dipped and or pre-galvanized accordance to specification that's available from manufacturer on request.
- All mesh panels , post are manufacture locally at facility with best quality standards.
- Wire size(mm) (3- 6mm)
- Wire tensile strength (560Mpa)
- Zinc mass (g/m²)

FACTORY LAY-OUT



FACTORY LAY-OUT



1. FENCING

1. Concrete Palisade fencing – Manufacturing and installation.

Projects completed:

1. Masilo Theunissen Graveyard
2. Lesotho /Fouriesburg Border
3. Bronville (Welkom) Graveyard
4. Monyakeng Graveyard (Wesselsbron)
5. Theronia Waste water Treatment (Welkom)
6. Reitz Water treatment plant
7. Ficksburg Border
8. Bothaville Graveyard
9. Meloding and Virginia CBD Graveyard

2. Clearview fencing -Manufacture and installation

Projects completed:

1. Eskom substations Welkom.
2. AMARI School - Welkom.
3. Graveyard Upington
4. Karapah Construction – Welkom (0836260868)
5. Simtrain PTY – Upington (0640318938)
6. Elohim Erets Retailers – Upington (0640318938)
7. Bloemfontein South landfill site. – Jonathan (082 563 3302)



REGISTRATIONS AND CONTACT DETAILS

TAX NO: 919 422 3849

VAT NO: 417 016 2236

CK NO: 1996/034821/33

CSD NO: MAAA 0672510

CIDB NO: 10329385 (4SQ)

LEVEL 1 - BBBEEE

Contact Details:

louislouw5@gmail.com

+27 76762 2122 (Louw)

+ 27 605399497 (Louis)

+27 63 555 7379 (Jackson)

Main Office: 63 Third Street, Voorspoed, Welkom

Tel: 057-0503130/1 (Office)